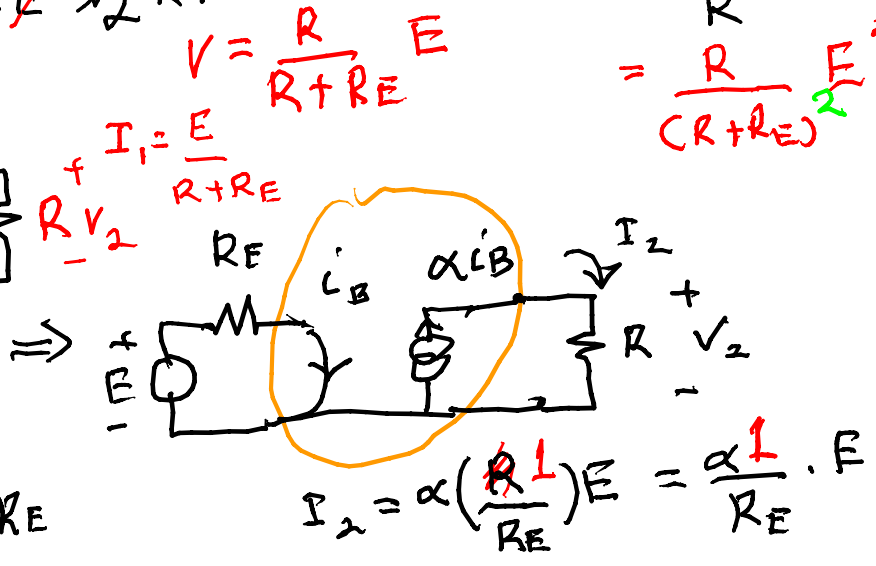
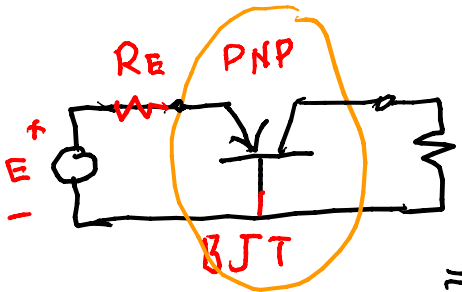
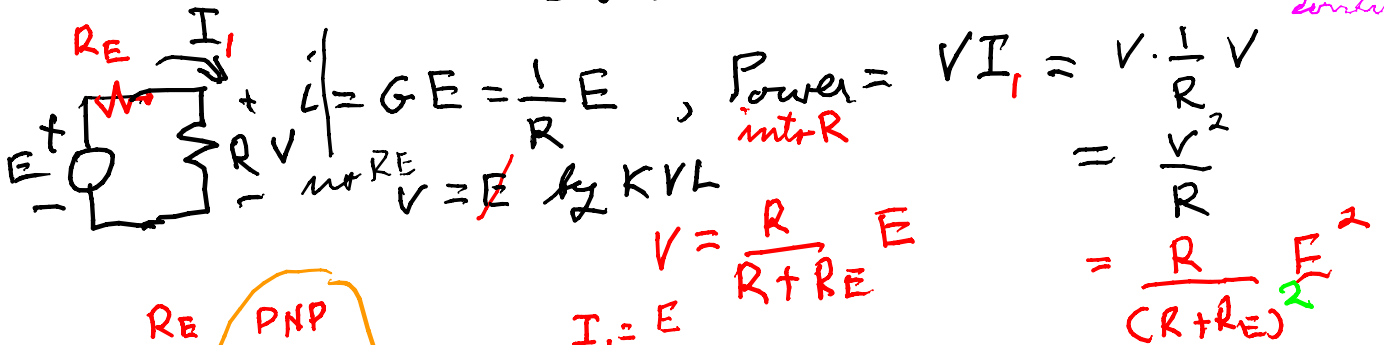


EE 303
 01/25/06
 ⇒ 02/01/06
 correction

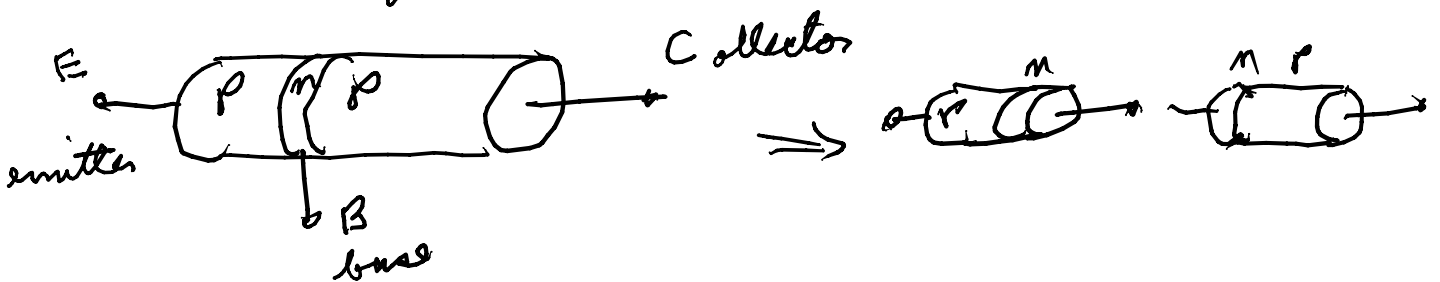
Transistor = transfer resistor

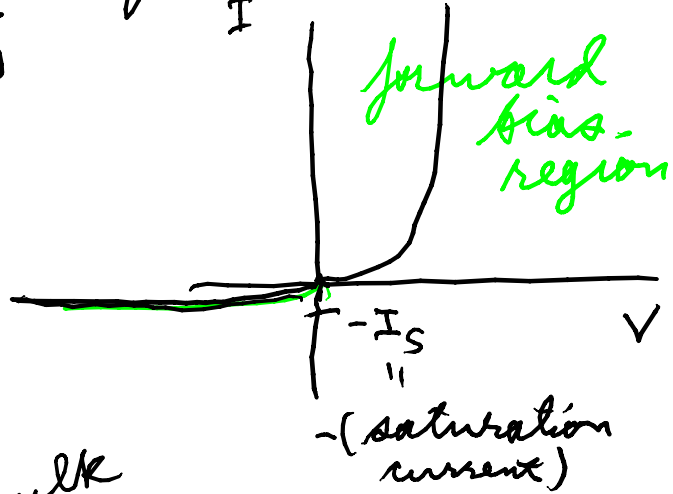
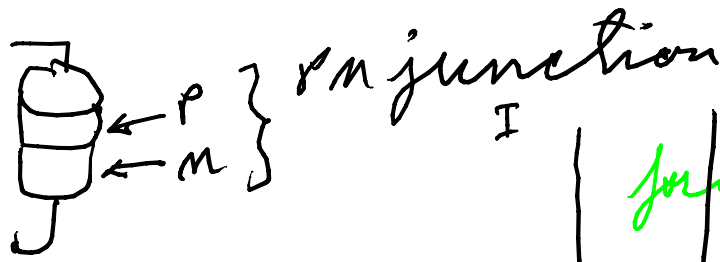
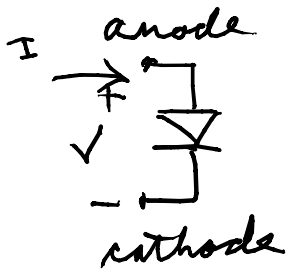


$I_B = E/R_E$

$P = V_2 I_2 = R I_2 \cdot I_2 \approx \frac{1}{R_E} E$ as $\alpha \approx 1$
 $= R \frac{1}{R_E} \cdot E \cdot \frac{1}{R_E} E$
 $= \frac{R}{R_E^2} \cdot E^2 > \frac{R}{(R+R_E)^2} E^2$ ← correction

transistor gave power gain





MOS

