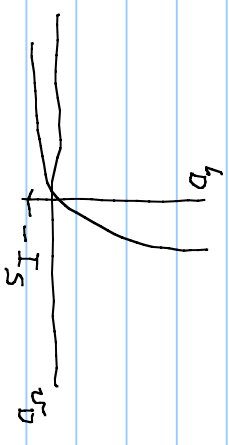
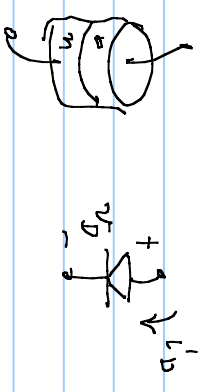


EE 303H  
09/01/16

setting up PS piles for transistors' curves and parasitic sum.

Diode solid state

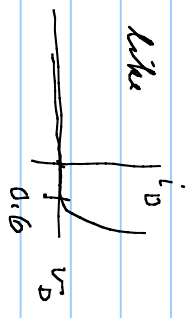


$$i_D = I_S (e^{v_D/V_T} - 1)$$

$V_T = \text{thermal voltage}$

an analytic function

actual more like



$I_S \approx 26 \text{ mV} @ 300 \text{ mK}$   
 but dependent on area of anode/cathode  
 $\approx 10^{-13} \text{ amp}$

