

Agave conventions

$D = \text{diode}$

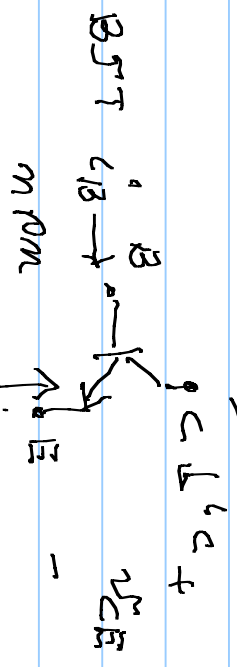
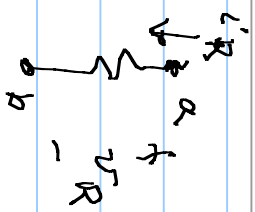
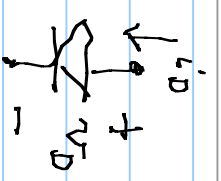
$Q = \text{BJT}$

$M = \text{MOS}$

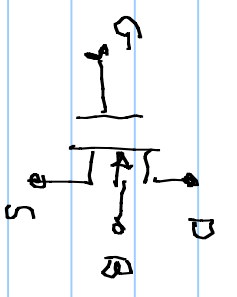
$G = \text{VCCS}$

$F = \text{CCCS}$

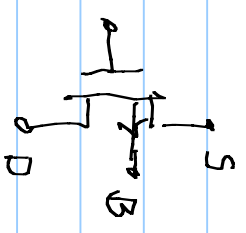
$G_{\text{value}} = \text{allows function inputs}$



$x_A = x_A + x_a$
 || ↑ ↑ ↑
 Total bias signals
 DC



N channel

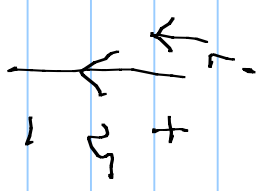
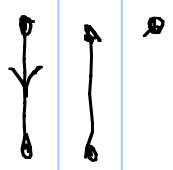
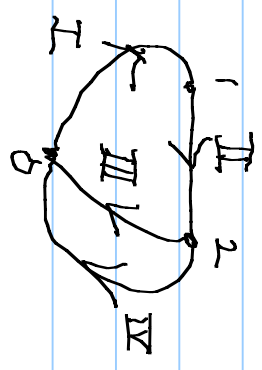
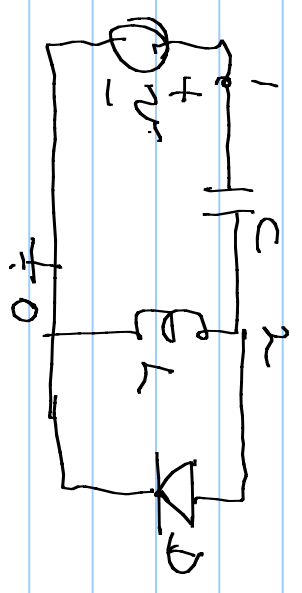


P channel

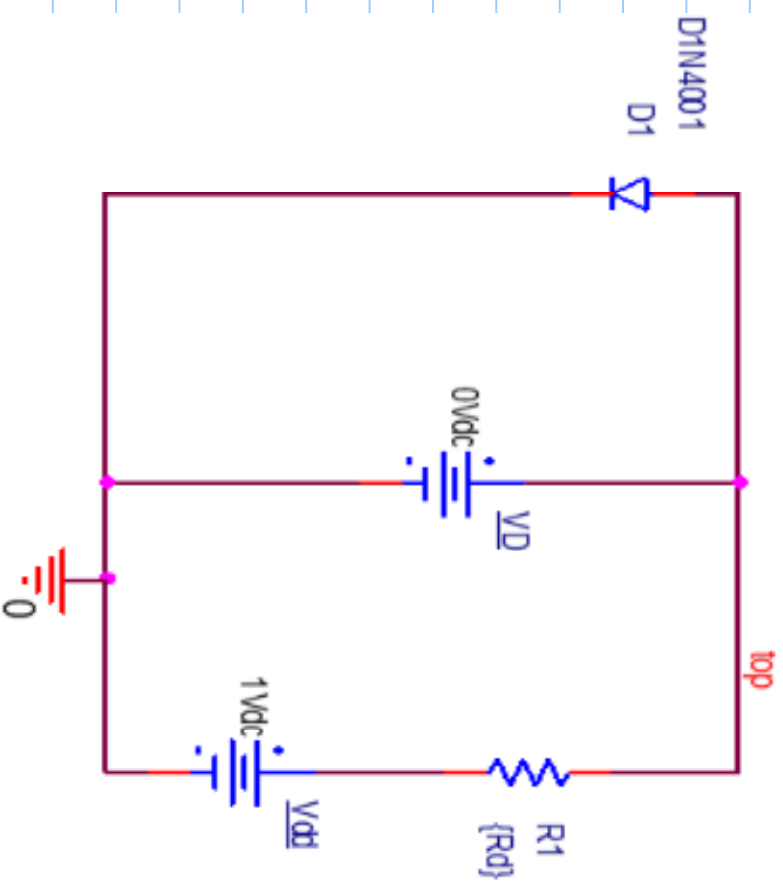
Branch theory for circuits

!! set of nodes = points
 lines connecting points
 orient to current directions

EX:



i_{v_s} = Power in



PARAMETERS:

Rd = 1k

