

Homework due today will be due on Thursday (but there is a new homework today).

EE 303 Tu 09/09/08

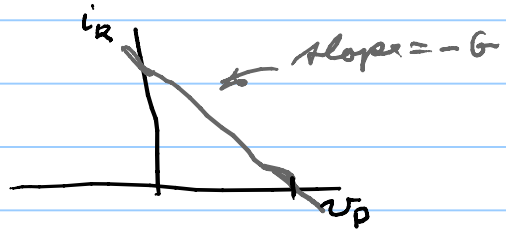
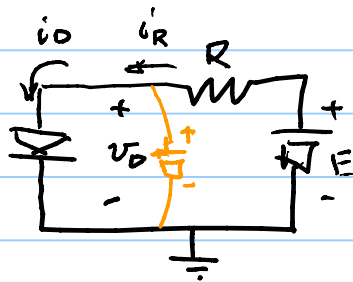
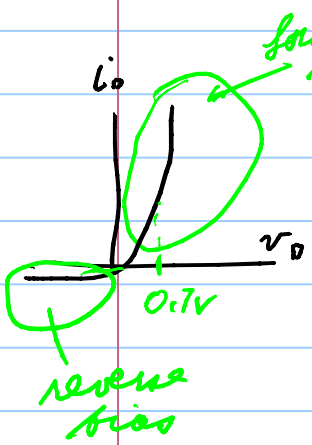
To change background colors in Probe:
 edit in Version 8 or less : msim.ini
 in Version 9 or greater: pspice.ini
 go to [Probe Display Colors]

Background = Brightwhite

To install *.lib files in Ver. 9+:

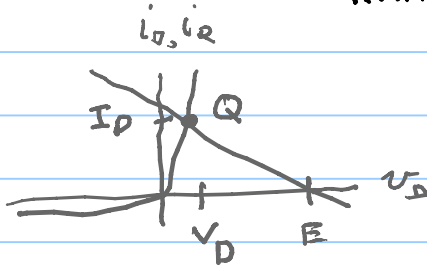
under the menu: Pspice

Edit Configuration Profile

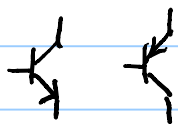


KVL: $-v_D - R i_R + E = 0$

$i_R = (v_D - E) / R = G(-v_D + E)$

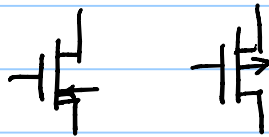


Transistors



BJT
 npn pnp

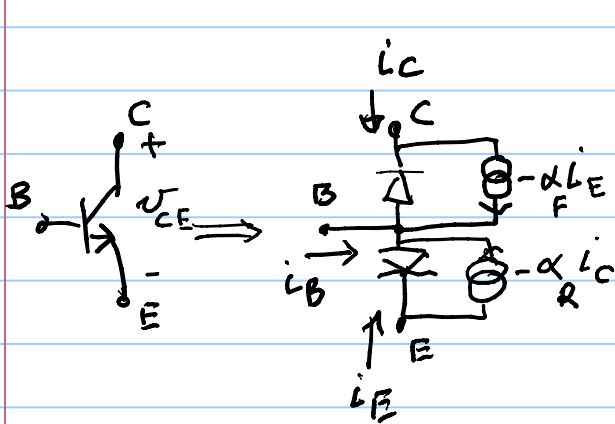
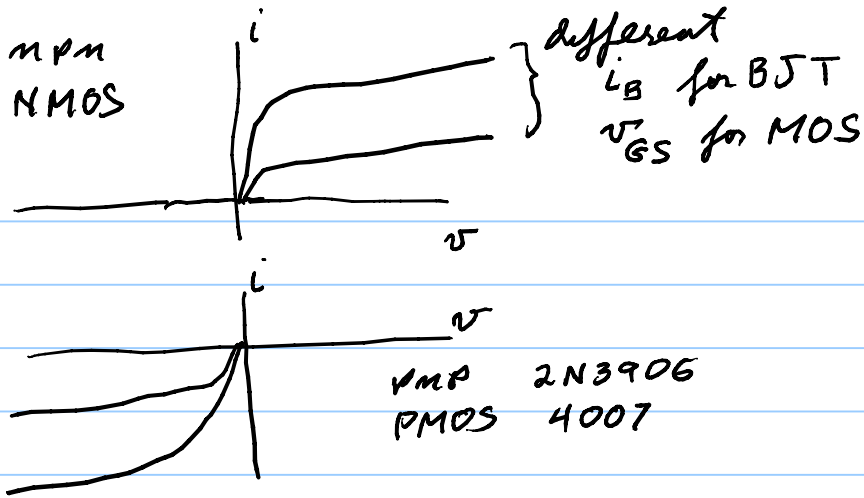
CCCS



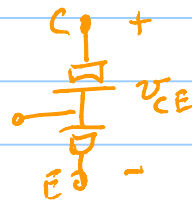
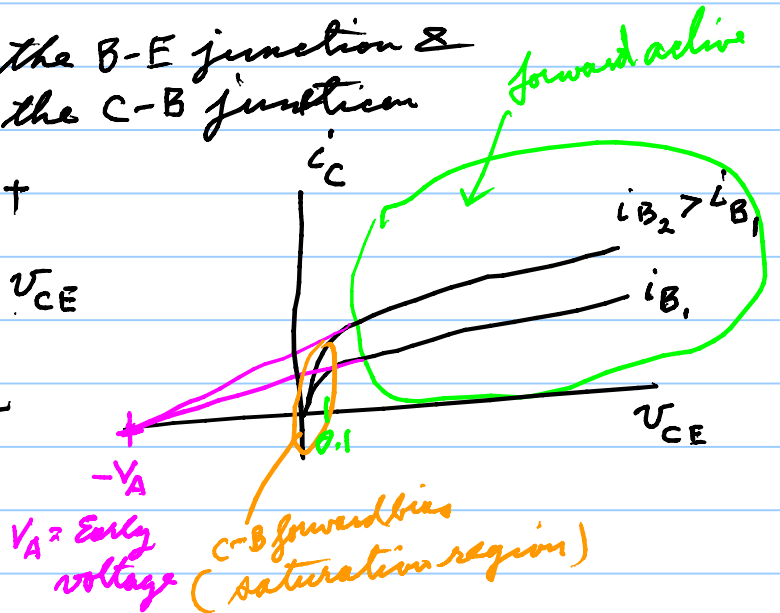
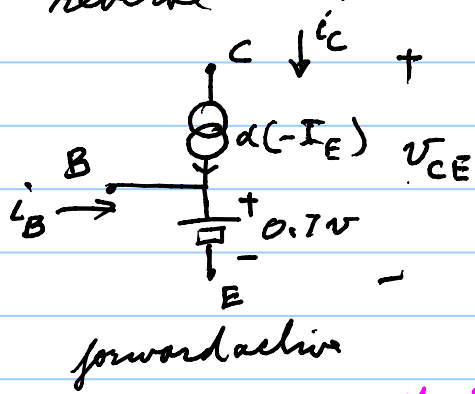
MOS
 NMOS PMOS

VCCS

2N3904 mpm
4007 NMOS



if we forward bias the B-E junction & reverse bias the C-B junction



MOS

