

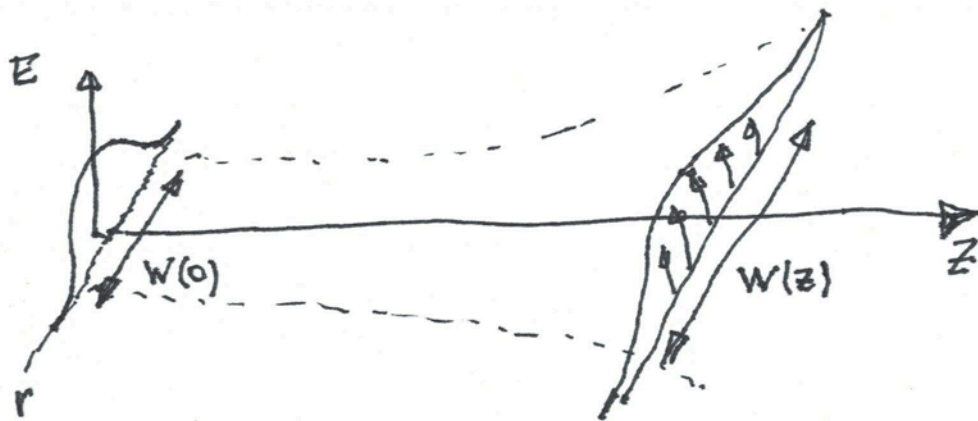
# ENEE381

Lecture 09

Diffraction, Interference

# Diffraction

Waves launched from a finite size source spread out as they propagate.

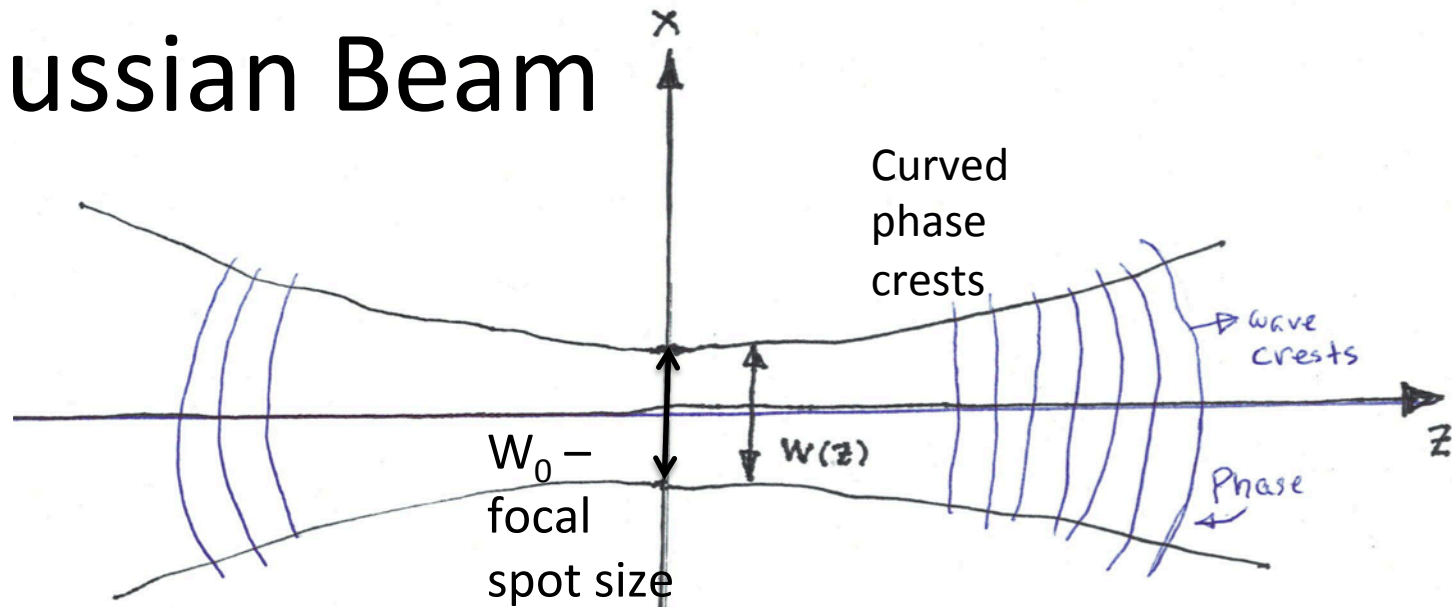


$$W(z) = W(0) \sqrt{1 + z^2 / Z_R^2}$$

$$Z_R = \frac{1}{2} k W^2(0)$$

Rayleigh Length

# Gaussian Beam



$$E_{x,y}(x,y,z) = \frac{E_0}{1 + iz/Z_R} \exp \left[ -\frac{(x^2 + y^2)}{W_0^2 (1 + iz/Z_R)} + ikz \right]$$

$$W(z) = W_0 \sqrt{1 + z^2/Z_R^2}$$

$$Z_R = \frac{1}{2} kW_0^2$$

Rayleigh Length

$$E_{x,y}(0,0,z) = \frac{E_0}{1 + iz/Z_R} \exp[+ikz] = \frac{E_0}{\sqrt{1 + (z/Z_R)^2}} \exp[+ikz + i\phi(z)]$$

Guoy Phase  $\tan \phi = -z/Z_R$

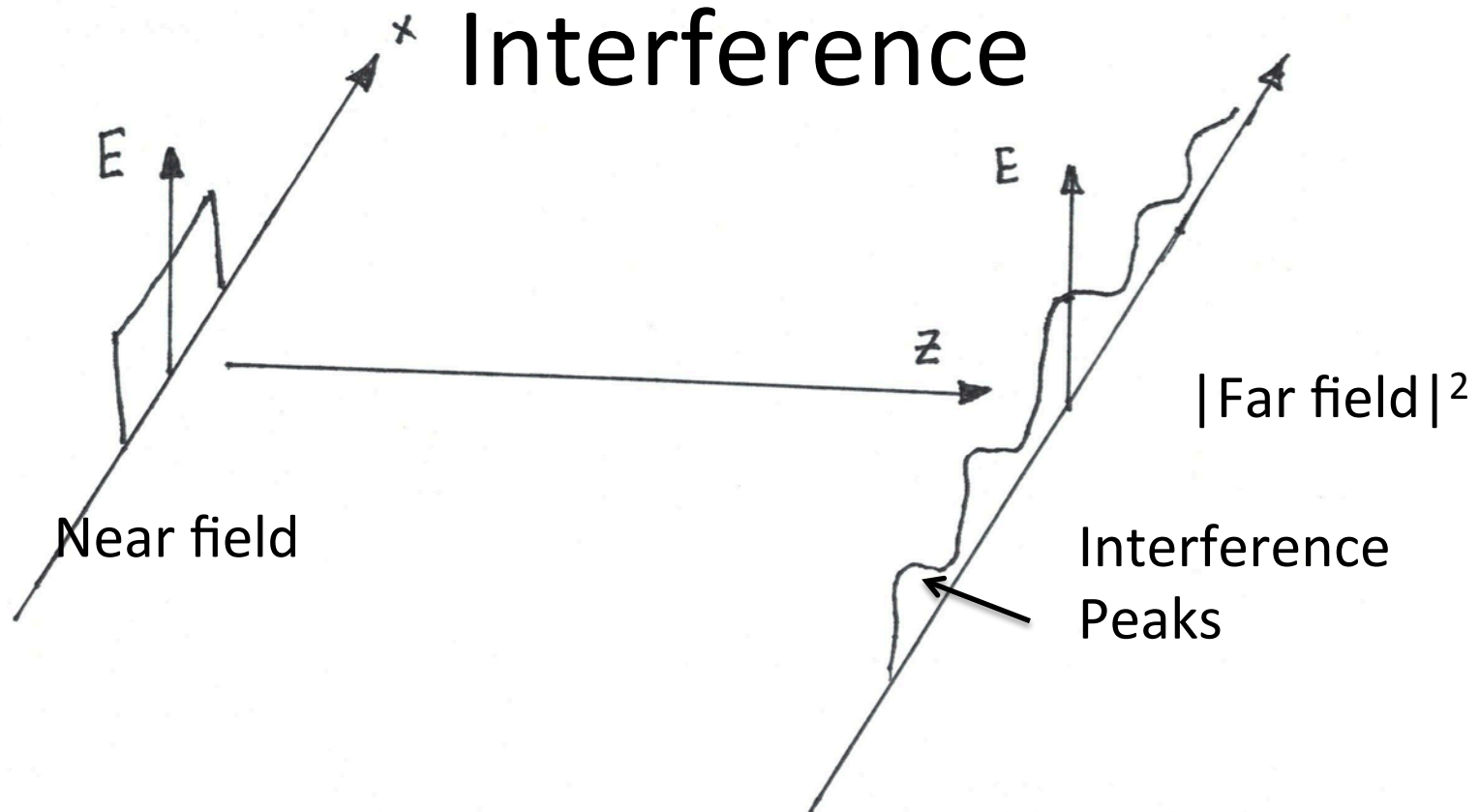
$$E_{x,y}(x,y,z) = \frac{E_0}{1 + iz/Z_R} \exp \left[ -\frac{(x^2 + y^2)}{W_0^2 (1 + iz/Z_R)} + ikz \right]$$

$$= \underbrace{\frac{E_0}{\sqrt{1 + z^2/Z_R^2}} \exp \left[ -\frac{(x^2 + y^2)}{W_0^2 (1 + z^2/Z_R^2)} \right]}_{\text{Amplitude}} \exp \left\{ i \underbrace{\left[ kz + \frac{z(x^2 + y^2)}{Z_R W_0^2 (1 + z^2/Z_R^2)} + \phi_G \right]}_{\text{Phase}} \right\}$$

Amplitude

Phase

As  $z \rightarrow \infty$   $ik \left[ z + \frac{(x^2 + y^2)}{2z} \right] + \phi_G = ikr + \phi_G$



Far field is Fourier transform of near field.

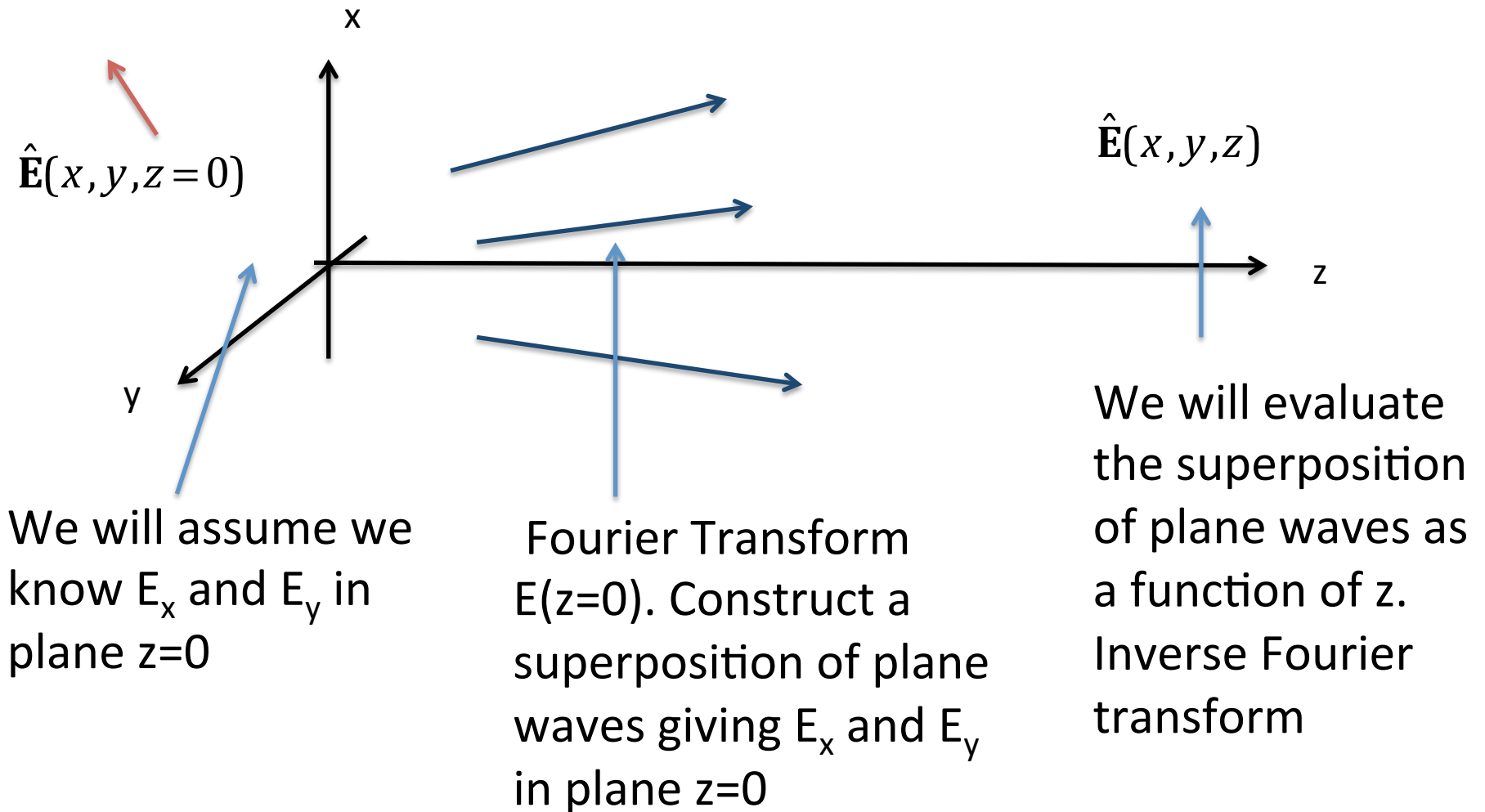
$$E_{x,y}(x,y,z) = \frac{k}{2i\pi z} \bar{E}_{x,y}\left(\frac{kx}{z}, \frac{ky}{z}, 0\right) \exp\left[ik\left(z + \frac{x^2 + y^2}{2z}\right)\right]$$

# Problem

A certain infrared (wavelength 1 micrometer) laser beam can be focused to a spot size ( $W_0 = 15$  micrometers).

1. What is the Rayleigh distance?
2. Suppose the central intensity at the focal point is  $10^{18}$  W/cm<sup>2</sup>, What is the central intensity 3 meters from the focus? What is the RMS electric field?

# Approach



# Wave Equation

$$\nabla \cdot \vec{\mathbf{E}} = 0 \quad \nabla \cdot \vec{\mathbf{H}} = 0 \quad \nabla \times \vec{\mathbf{E}} = -\mu \frac{\partial \vec{\mathbf{H}}}{\partial t} \quad \nabla \times \vec{\mathbf{H}} = \epsilon \frac{\partial \vec{\mathbf{E}}}{\partial t}$$

To get equations  
for phasor  
amplitudes

$$\vec{\mathbf{E}}, \vec{\mathbf{H}} \Rightarrow \text{Re} \left\{ \left( \hat{\mathbf{E}}(\mathbf{x}), \hat{\mathbf{H}}(\mathbf{x}) \right) e^{-i\omega t} \right\} \quad \frac{\partial}{\partial t}, \nabla \Rightarrow -i\omega, \nabla$$

$$\nabla \cdot \hat{\mathbf{E}} = 0 \quad \nabla \cdot \hat{\mathbf{H}} = 0 \quad \nabla \times \hat{\mathbf{E}} = i\omega\mu\hat{\mathbf{H}} \quad \nabla \times \hat{\mathbf{H}} = -i\omega\epsilon\hat{\mathbf{E}}$$

Combine

$$\nabla \times (\nabla \times \hat{\mathbf{E}}) = i\omega\mu\nabla \times \hat{\mathbf{H}} = \omega^2\epsilon\mu\hat{\mathbf{E}} = k^2\hat{\mathbf{E}}$$

$$\nabla(\nabla \cdot \hat{\mathbf{E}}) - \nabla^2\hat{\mathbf{E}} = \boxed{-\nabla^2\hat{\mathbf{E}} = k^2\hat{\mathbf{E}}} \quad k^2 = \frac{\omega^2}{v^2}, \quad \lambda = \frac{2\pi}{k}$$



Consider transverse components,

$$\mathbf{E}_x \quad \mathbf{E}_y$$

$$-\nabla^2 \hat{\mathbf{E}} = k^2 \hat{\mathbf{E}} \quad \rightarrow \quad -\left(\frac{\partial^2}{\partial x^2} + \frac{\partial^2}{\partial y^2} + \frac{\partial^2}{\partial z^2}\right) E_{x,y} = k^2 E_{x,y} \quad k^2 = \omega^2 \epsilon \mu$$

Take spatial Fourier transform in x and y

$$-\int_{-\infty}^{\infty} dx \int_{-\infty}^{\infty} dy \exp[-ik_x x - ik_y y] \left(\frac{\partial^2}{\partial x^2} + \frac{\partial^2}{\partial y^2} + \frac{\partial^2}{\partial z^2}\right) E_{x,y} = k^2 \bar{E}_{x,y}(k_x, k_y, z)$$

$$\int_{-\infty}^{\infty} dx \int_{-\infty}^{\infty} dy \exp[-ik_x x - ik_y y] E_{x,y} = \bar{E}_{x,y}(k_x, k_y, z)$$

$$\left(k_x^2 + k_y^2 - \frac{\partial^2}{\partial z^2}\right) \bar{E}_{x,y} = k^2 \bar{E}_{x,y}(k_x, k_y, z)$$

# Solutions

$$\left( k_x^2 + k_y^2 - \frac{\partial^2}{\partial z^2} \right) \bar{E}_{x,y} = k^2 \bar{E}_{x,y}(k_x, k_y, z) \quad \text{Second order DEQ- 2 solutions}$$

$$\bar{E}_{x,y} = A \exp(ik_z z) + B \exp(-ik_z z), \quad k_z = \sqrt{k^2 - (k_x^2 + k_y^2)}, \quad k^2 > (k_x^2 + k_y^2)$$

$$\bar{E}_{x,y} = A \exp(-\kappa_z z) + B \exp(+\kappa_z z), \quad \kappa_z = \sqrt{(k_x^2 + k_y^2) - k^2}, \quad k^2 < (k_x^2 + k_y^2)$$

Boundary condition as z goes to infinity B=0

$$\bar{E}_{x,y} = \bar{E}_{x,y}(k_x, k_y, z=0) \exp(ik_z z), \quad k_z = \sqrt{k^2 - (k_x^2 + k_y^2)}, \quad k^2 > (k_x^2 + k_y^2)$$

$$\bar{E}_{x,y} = \bar{E}_{x,y}(k_x, k_y, z=0) \exp(-\kappa_z z), \quad \kappa_z = \sqrt{(k_x^2 + k_y^2) - k^2}, \quad k^2 < (k_x^2 + k_y^2)$$

 We know this

# Divergence $\mathbf{E} = 0$

$$\nabla \cdot \hat{\mathbf{E}} = 0 \quad \text{Fourier Transform in } x \text{ and } y \Rightarrow \frac{\partial}{\partial z} \bar{E}_z = -i(k_x \bar{E}_x + k_y \bar{E}_y)$$

$$\bar{E}_z = \frac{-1}{k_z} (k_x \bar{E}_x + k_y \bar{E}_y) \exp(ik_z z), \quad k^2 > (k_x^2 + k_y^2)$$

$$\bar{E}_{x,y} = \frac{i}{\kappa_z} (k_x \bar{E}_x + k_y \bar{E}_y) \exp(-\kappa_z z), \quad k^2 < (k_x^2 + k_y^2)$$

We can find  $E_z$  after the problem for  $E_x$  and  $E_y$  is solved

# Fourier Inversion

$$E_{x,y}(x,y,z) = \int_{-\infty}^{\infty} dk_x \int_{-\infty}^{\infty} dk_y \bar{E}_{x,y}(k_x, k_y, z) \exp[ik_x x + ik_y y]$$

$$\bar{E}_{x,y} = \bar{E}_{x,y}(k_x, k_y, z=0) \exp(ik_z z), \quad k_z = \sqrt{k^2 - (k_x^2 + k_y^2)}, \quad k^2 > (k_x^2 + k_y^2)$$

$$\bar{E}_{x,y} = \bar{E}_{x,y}(k_x, k_y, z=0) \exp(-\kappa_z z), \quad \kappa_z = \sqrt{(k_x^2 + k_y^2) - k^2}, \quad k^2 < (k_x^2 + k_y^2)$$

Let's assume  $\bar{E}_{x,y}(k_x, k_y, z=0) \rightarrow 0$  for  $k^2 < (k_x^2 + k_y^2)$

$$E_{x,y}(x,y,z) = \int_{-\infty}^{\infty} dk_x \int_{-\infty}^{\infty} dk_y \bar{E}_{x,y}(k_x, k_y, 0) \exp\left[ik_x x + ik_y y + iz\sqrt{k^2 - (k_x^2 + k_y^2)}\right]$$

# Consider Gaussian Dependence on x,y in plane z=0

Gaussian E

$$E_{x,y} = E_0 \exp\left[-\frac{x^2 + y^2}{W_0^2}\right]$$

Fourier Transform

$$\bar{E}_{x,y}(k_x, k_y, 0) = \int_{-\infty}^{\infty} dx \int_{-\infty}^{\infty} dy \exp[-ik_x x - ik_y y] E_0 \exp\left[-\frac{x^2 + y^2}{W_0^2}\right]$$

Complete Square

$$\frac{x^2}{W_0^2} + ik_x x = \frac{(x + ik_x W_0^2 / 2)^2}{W_0^2} + \frac{k_x^2 W_0^2}{4}$$

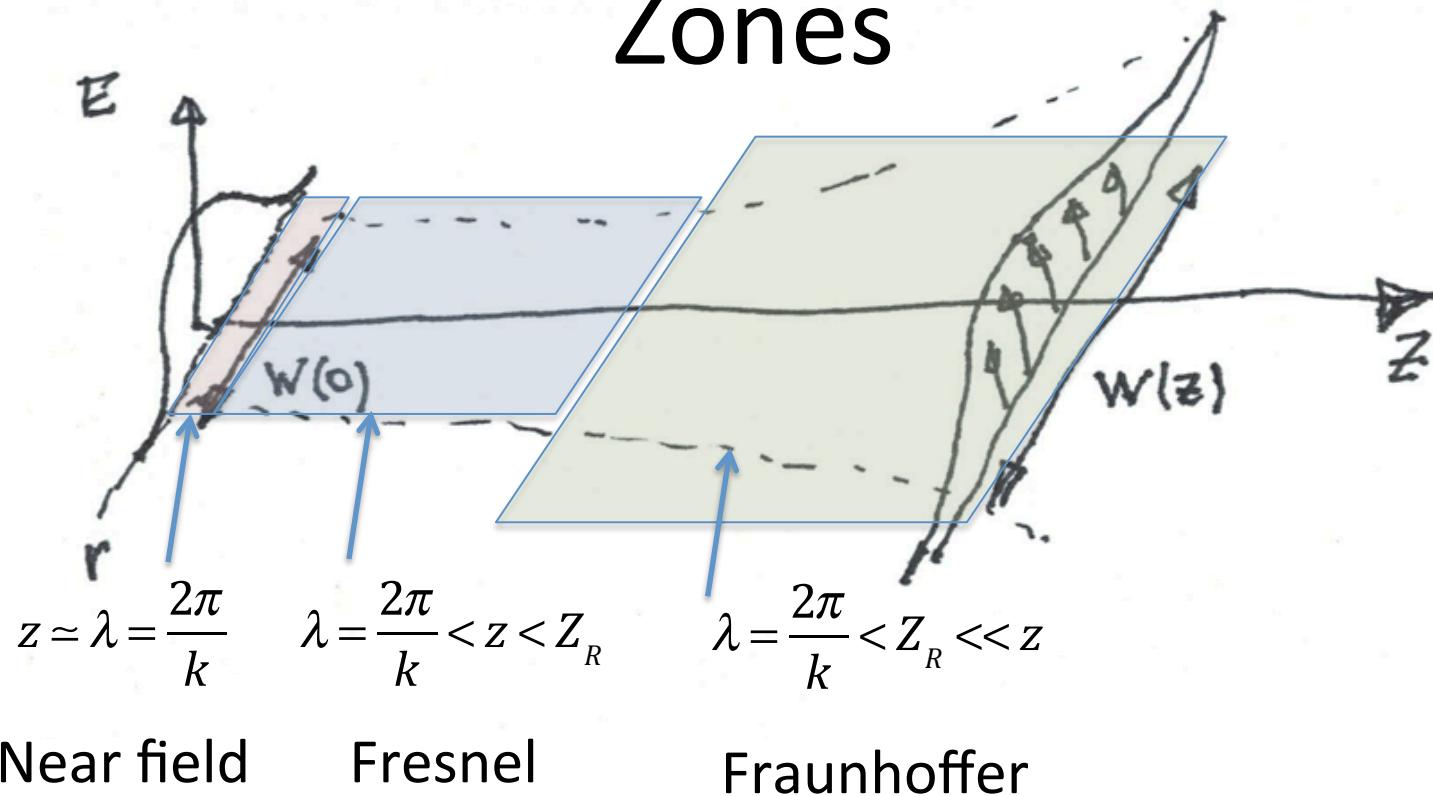
K-space E

$$\bar{E}_{x,y}(k_x, k_y, 0) = \pi W_0^2 E_0 \exp\left[-\frac{(k_x^2 + k_y^2) W_0^2}{4}\right]$$

$W_0$  - width in space

$2/W_0$  - Width in  $k_x, k_y$

# Zones



Fresnel: Invented the Fresnel lens. Installed in lighthouses around the world. Saved many lives.

Fraunhofer: Orphaned at age 11. Worked for glass maker. Buried in collapsed building. Rescued by a Prince. Invented the spectroscope.

1 . Fourier transform  $\bar{E}_{x,y}(k_x, k_y, 0) = \pi W_0^2 E_0 \exp\left[-\frac{(k_x^2 + k_y^2) W_0^2}{4}\right]$

2 . Inverse transform

$$E_{x,y}(x, y, z) = \int_{-\infty}^{\infty} \frac{dk_x}{2\pi} \int_{-\infty}^{\infty} \frac{dk_y}{2\pi} \bar{E}_{x,y}(k_x, k_y, 0) \exp\left[ik_x x + ik_y y + iz \sqrt{k^2 - (k_x^2 + k_y^2)}\right]$$

Note:  $\bar{E}_{x,y}(k_x, k_y, 0) \rightarrow 0$  for  $k_x^2 + k_y^2 > W_0^{-2} \ll k^2$

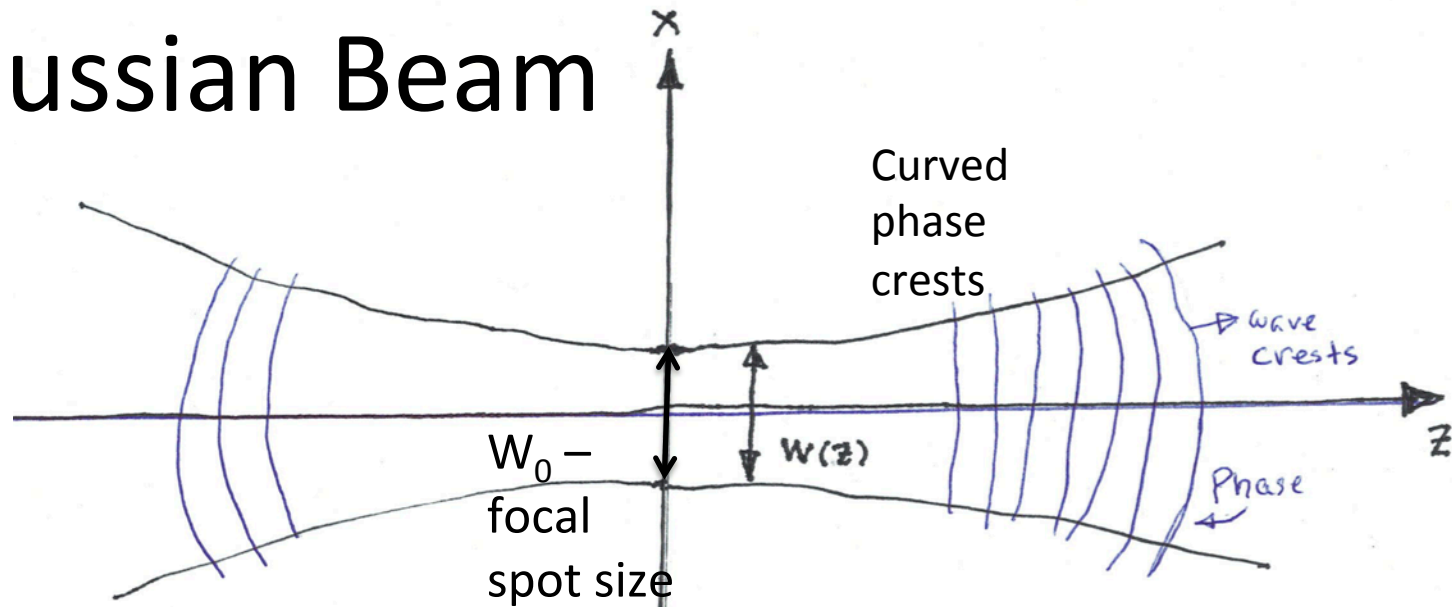
Expand:  $\sqrt{k^2 - (k_x^2 + k_y^2)} \simeq k - \frac{k_x^2 + k_y^2}{2k}$

$$E_{x,y}(x, y, z) = \pi W_0^2 E_0 \int_{-\infty}^{\infty} \frac{dk_x}{2\pi} \int_{-\infty}^{\infty} \frac{dk_y}{2\pi} \exp\left[-(k_x^2 + k_y^2) \left[\frac{W_0^2}{4} + \frac{iz}{2k}\right] + ik_x x + ik_y y + ikz\right]$$

Complete square:

$$E_{x,y}(x, y, z) = \frac{E_0}{1 + iz / Z_R} \exp\left[-\frac{(x^2 + y^2)}{W_0^2 (1 + iz / Z_R)} + ikz\right]$$

# Gaussian Beam



$$E_{x,y}(x,y,z) = \frac{E_0}{1 + iz/Z_R} \exp \left[ -\frac{(x^2 + y^2)}{W_0^2 (1 + iz/Z_R)} + ikz \right]$$

$$W(z) = W_0 \sqrt{1 + z^2/Z_R^2}$$

$$Z_R = \frac{1}{2} kW_0^2$$

Rayleigh Length

$$E_{x,y}(0,0,z) = \frac{E_0}{1 + iz/Z_R} \exp[+ikz] = \frac{E_0}{\sqrt{1 + (z/Z_R)^2}} \exp[+ikz + i\phi(z)]$$

Guoy Phase  $\tan \phi = -z/Z_R$



# Far Field Radiation Pattern

$$E_{x,y}(x,y,z) = \int_{-\infty}^{\infty} \frac{dk_x}{2\pi} \int_{-\infty}^{\infty} \frac{dk_y}{2\pi} \bar{E}_{x,y}(k_x, k_y, 0) \exp \left[ ik_x x + ik_y y + iz \sqrt{k^2 - (k_x^2 + k_y^2)} \right]$$

$$\bar{E}_{x,y}(k_x, k_y, 0) \rightarrow 0 \text{ for } k_x^2 + k_y^2 \ll k^2 \quad \sqrt{k^2 - (k_x^2 + k_y^2)} \simeq k - \frac{k_x^2 + k_y^2}{2k}$$

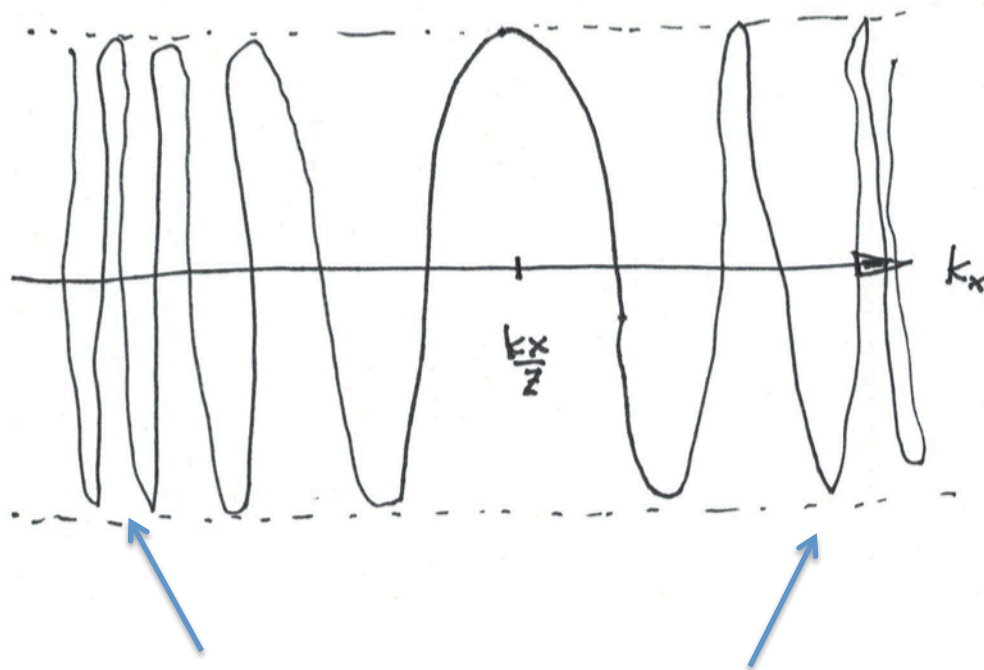
$$\lim_{z \rightarrow \infty} \exp \left[ -\frac{iz}{2k} (k_x^2 + k_y^2) + ik_x x + ik_y y \right] = \text{Delta functions}$$

$$\frac{2\pi k}{iz} \exp \left[ ik \frac{x^2 + y^2}{2z} \right] \delta \left( k_x - \frac{kx}{z} \right) \delta \left( k_y - \frac{ky}{z} \right)$$

$$E_{x,y}(x,y,z) = \frac{k}{2i\pi z} \bar{E}_{x,y} \left( \frac{kx}{z}, \frac{ky}{z}, 0 \right) \exp \left[ ik \left( z + \frac{x^2 + y^2}{2z} \right) \right]$$

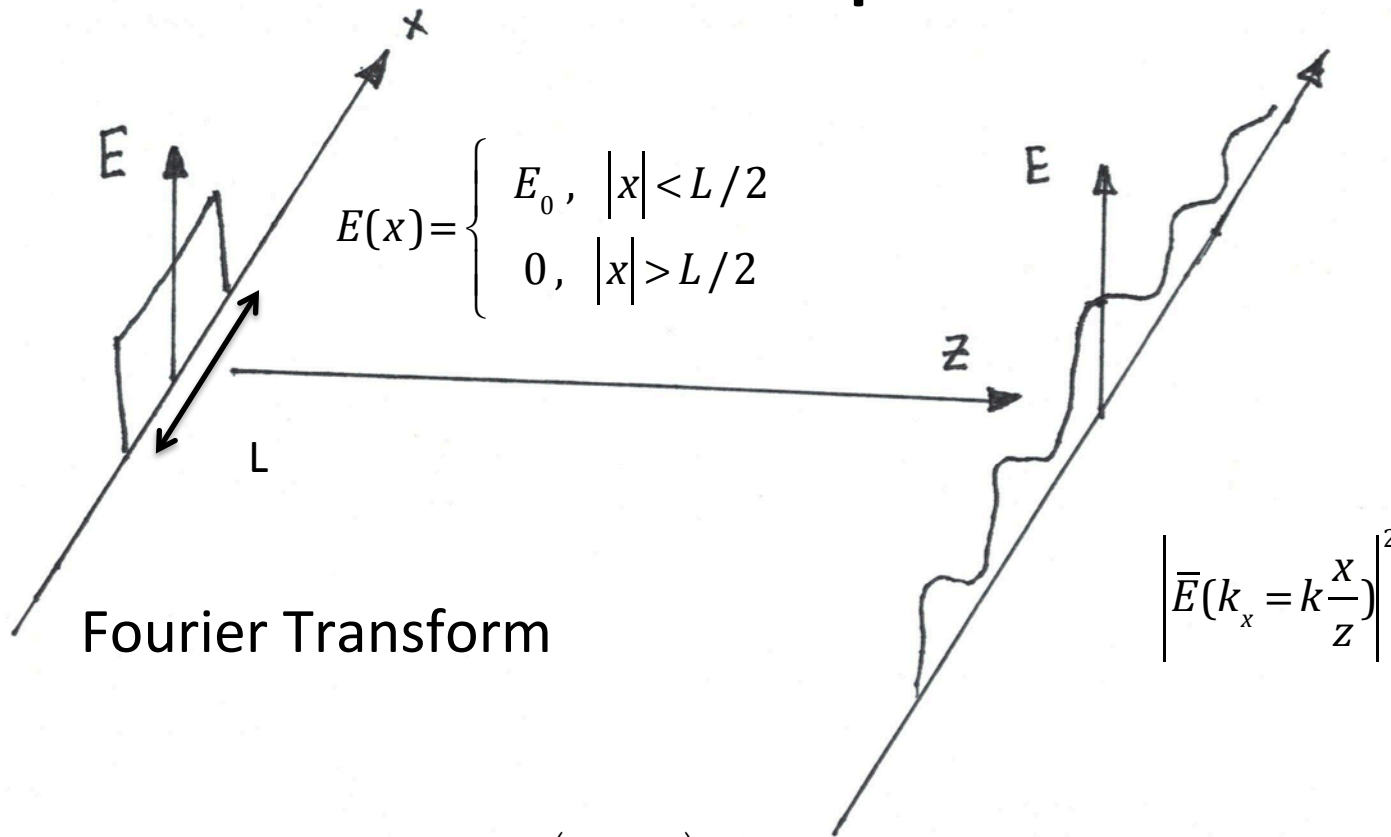
# Stationary Phase

$$\lim_{z \rightarrow \infty} \exp\left[-\frac{iz}{2k} k_x^2 + ik_x x\right] = \lim_{z \rightarrow \infty} \exp\left[-\frac{iz}{2k} \left(k_x - \frac{kx}{z}\right)^2 + i\frac{kx^2}{2z}\right]$$



Rapid oscillations integrate to zero

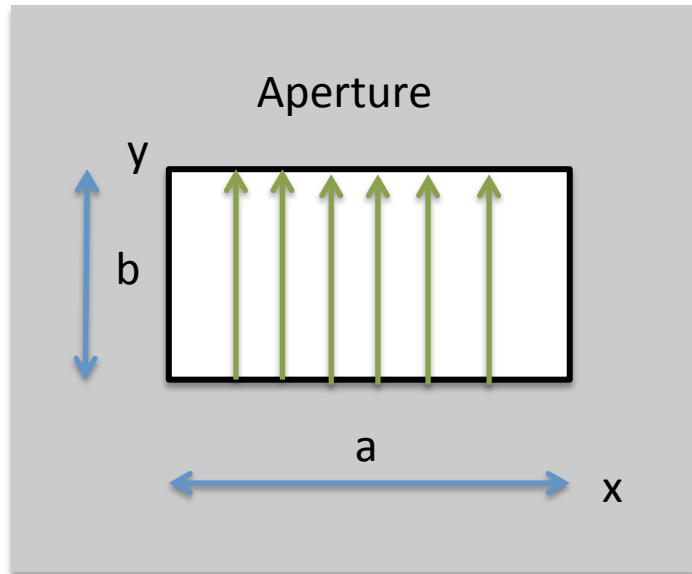
# Example



$$\bar{E}(k_x) = \int_{-L/2}^{L/2} dx E_0 \exp[-ik_x x] = E_0 \frac{\sin(k_x L/2)}{k_x/2}$$

zero when  $\frac{k_x L}{2} = p\pi \rightarrow \tan \theta = \frac{x}{z} = \frac{2\pi p}{L}$

# Problem



The electric field in an aperture must satisfy boundary conditions on the edges of the aperture.

What are they?

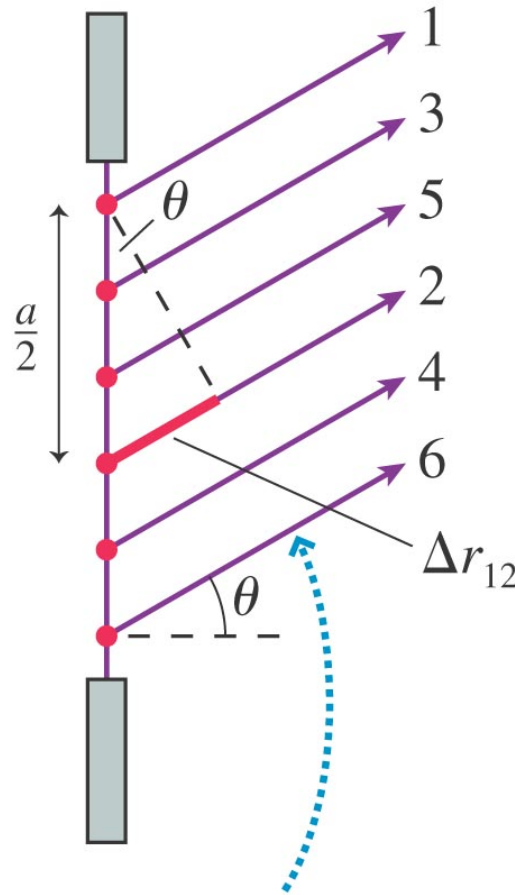
Make up a simple function that satisfies the BC's

Find (for Thursday) the far field diffraction pattern

When is there perfect destructive interference?

(c)

Each point on the wave front is paired with another point distance  $a/2$  away.



These wavelets all meet on the screen at angle  $\theta$ . Wavelet 2 travels distance  $\Delta r_{12} = (a/2) \sin \theta$  farther than wavelet 1.

Copyright © 2008 Pearson Education, Inc., publishing as Pearson Addison-Wesley.

Destructive when

$$\Delta r_{12} = \frac{a}{2} \sin \theta = \frac{\lambda}{2}$$

1 cancels 2  
3 cancels 4  
5 cancels 6  
Etc.

Also:

$$\frac{a}{2p} \sin \theta_p = \frac{\lambda}{2}$$

$$p = 1, 2, 3, \dots$$

